



Adam A. Donaldson @adamadonaldson

Oct 28, 2024 · 62 tweets · [adamadonaldson/status/1851019596695814619](https://twitter.com/adamadonaldson/status/1851019596695814619)

Coming up at 6 pm, it's this month's Guelph Public Library Board meeting. This is what's on the agenda:

MEETING PREVIEW: Guelph Public Library Board for October 28, 2024

Nothing spooky ahead of this month's meeting of the Guelph Public Library Board of Directors, but there may be some tricks and treats for anyone interested in attending. In terms of presentat...

<https://guelphpolitico.ca/2024/10/22/meeting-preview-guelph-public-library-board-for-o...>

Chair Williamson has called the meeting to order.

Motion to approve the agenda passed.

Regrets from Member Ellery who's teaching tonight.

No Declaration of Pecuniary Interests.

Consent agenda approved.

5 Consent Agenda (15 min) – Board Review

6:15 p.m. Motion

- 5.1 Adoption of September 2024 Minutes
- 5.2 Correspondence
- 5.3 Acting CEO's Report
- 5.4 Service Utilization Scorecard
- 5.5 Service Capacity Scorecard
- 5.6 Operating Variance
- 5.7 New Central Library Update

D. Atkins
D. Atkins
D. Atkins
D. Atkins
D. Atkins

First item, 2025-2029 Strategic Plan. Brock from Overlap & Associates will lead the presentation.

The Vision:

Our Vision

Option 1: The expectation of inspiration

Option 2: Creating a community together

The Mission:

Our Mission

Option 1: The library provides an inclusive space and equitable access to craft community together

Option 2: We create space and provide ways for people to engage their curiosity and shape their lives where everyone belongs

There seems to be consensus that no one likes the word "craft", as it conjures images of "paper and glue". Others note that it does haven't anything about the mission of the library about information and access.

Remove the word "space", Member Ly asks. No so fast, why not have a reference about inclusive space instead. Perhaps options 1 and 2 can be combined somehow. Cllr Caron suggests...

"The library creates inclusive spaces and programs for people to engage their curiosity and create community."

How about something like "We create space, provide opportunities and shape curiosity in a place where we all belong." We'll get back to workshopping that...

Member Lepage says Option 2 is safe, but Option 1 is kind of inscrutable. What does it mean in terms of what the library is achieving? Member Cowan disagrees, we should expect to be inspired at the library, we should expect something big.

Member Webb says the exception of inspiration needs something at the beginning. Caron says none of this "hits her the way a vision should." Cllr Klassen says she's a fan of the first version, she's hoping for inspiration. A vision doesn't need to be tangible.

Member Carlsson suggests more action like "investing in inspiration" but she doesn't want to sound like a bank. Still, we have to show that the money is well spent here since the library offers computer access and is a warming station.

Williamson says he's always careful in crafting communications, they want to land something that's unique to the library and not overly generic. Member Rishworth says the inspiration piece has a different feel, it's not just buzz words.

Goller says that they have to be careful because exceptions are not always met. Brock says it's a goal, and you may not hit but you're pushing yourself that way. Inspiration is an idea, and the new main library building will be inspiring.

Klassen says they need to cast that big picture idea about what the library means: People don't think about "getting their money's worth" at the library (most people), need to capture what it is people want from the library.

Member Cowan says she's turned around on Vision #1, but is this a conversation everyone will have? Ly says there's a fear we can't cash that cheque, but they can't be afraid to be good at something. Williamson says they shouldn't be afraid to say you should expect a lot from GPL

Ly says even if they don't want to put a price tag, the \$62 million spent on the library does come with expectation and should embrace the idea that they will meet those. You put your money in the right place.

Values:

A purple rectangular slide with a white dotted pattern on the right edge. The title "Our Values" is in white bold font at the top left. Below it, the text "We value:" is in white. A bulleted list follows, with each item starting with a white dot and a bolded word in all caps. The items are: TRUST, BELONGING, CURIOSITY, and RESILIENCY, each followed by a description of the value in white text.

Our Values

We value:

- **TRUST**—We foster trust by acting with integrity, holding ourselves and others accountable, and consistently delivering compassion in our services.
- **BELONGING**—We nurture belonging by offering accessible, diverse services and space that promotes individual and collective wellness of community members.
- **CURIOSITY**—We support curiosity and innovation; we model lifelong learning and literacy.
- **RESILIENCY**—We foster resiliency by embracing change with integrity and innovation and supporting one another in overcoming challenges.

The Plan:

A purple rectangular slide with a white dotted pattern on the right edge. The title "Our Plan Vision" is in white bold font at the top left. Below it, the text "From Barriers to Bridges: Becoming a Cornerstone of Public Value" is in white. A paragraph of white text follows. To the right, there are three sections, each with a bolded title and a paragraph of white text. The sections are: KR 1.1—Create Welcoming and Inclusive Spaces, KR 1.2—Engage People in New and Innovative Ways, and KR 1.3—Cultivate Social Connections through Community-Informed Programming.

Our Plan Vision

From Barriers to Bridges: Becoming a Cornerstone of Public Value

Five years from now, the library is a vibrant hub of community engagement, where everyone feels welcome and empowered. Barriers to access have been removed, making our spaces fully inclusive, with partnerships and outreach ensuring the community knows and uses our resources. Membership has grown, with new user groups and youth programming flourishing. Customer service is praised for its inclusivity, and our digital channels have reached non-users effectively. Through community-informed programming and cultural competency, we've deepened social connections. The library is now a cornerstone of public value, fostering connection, growth, and a thriving, engaged public.

KR 1.1—Create Welcoming and Inclusive Spaces

We will foster partnerships, conduct accessibility audits, and engage in community outreach to ensure that our spaces are welcoming and inclusive. By promoting the resources we already have and addressing barriers to access, we aim to improve the public's ability to engage with us, both physically and digitally.

KR 1.2—Engage People in New and Innovative Ways

We will increase memberships, engage new user groups, and enhance the customer service experience by expanding youth programming, developing dedicated communication channels for non-users, and leveraging technology to meet diverse needs.

KR 1.3—Cultivate Social Connections through Community-Informed Programming

We will strengthen social connections by delivering programs shaped by community feedback and insights. Engagement will provide consistent touchpoints in the community, and we will engage in cultural competency training to ensure inclusivity. Acknowledging room for growth, we will create a continuous feedback loop to adapt programs to evolving community needs.

Webb has issue with the "cornerstone of public value" line, what does that mean? Lepage says it's about creating that third space, and Ly adds that it's key to the infrastructure that makes a city a good city.

Strategic Objectives:

Our Strategic Objectives

At a Glance

We Will:

Invest in our team

Amplify our stories

Build future-focused libraries

Goller asks about switching that to "Invest in our community" because he should focus on benefiting the community and not just the organization, it sounds like "empire building". Brock says this is about staffing, but maybe they can boost how that reflects back on community.

Invest in our Team

Investing in our team cultivates an environment of growth, collaboration, and mutual respect where every member feels valued and empowered to contribute. Reframing the mindset around training aims to foster a culture that not only encourages continuous learning but also builds strong, trusting relationships within our organization. This continuous investment in our team is the foundation of enhancing our service delivery and achieving our mission and plan vision effectively.

KR 1.1—Reframe our mindset around training

KR 1.2—Growing the team's knowledge and size

KR 1.3—Building and maintaining trust

Lepage says the team is foundation, you need to have a good and well-trained team. Also, over 100 staff members are community too, and people should stop thinking themselves as only one thing.

No comments about this one.

and hold down Option+Spacebar.

Align our stories

Aligning our stories will elevate the narrative surrounding our library's services and impact within the community. Actively sharing our unique experiences, successes, and values will foster a deeper connection with patrons and community stakeholders. This initiative emphasizes the importance of collective storytelling, where every voice contributes to a richer, more comprehensive understanding of our library's role in the community and the value we offer.

- KR 2.1—Celebrate who we are**
- KR 2.2—Grow community partnerships**
- KR 2.3—Improve internal communications**

What does matches central library mean? Making significant investment downtown, but there should be a similar expectation of inspiration with the other branches too.

and hold down Option+Spacebar.

Build future-focused libraries

Our goal is to position the library as critical infrastructure. By thoughtfully executing the GPL's facilities plan and master plan we will further solidify the library's role as our community's informal third space—essential hubs of learning, connection, and cultural enrichment. The first major step in this journey is well underway, by successfully opening and integrating the new downtown branch we will create a new platform by which to welcome our community.

- KR 3.1—Successfully open new central library**
- KR 3.2—Branches match the central library**
- KR 3.3—Planning to meet Guelph's growth**

Member Sadagoban notes that this is an institution that connects the physical and the digital worlds, but not all libraries offer the same thing. Williamson says this is essentially about investing in branches so that they have a similar experience & not letting branches die.

Acting CEO Atkins notes that they want to get final draft by end of November, so when does Brock want all final feedback? He says by Friday would be good, but sooner is better.

Williamson thanks Brock. He thinks they're closer to something that they're going to be happy with.

Motion to receive draft report approved.

Next, Donor Recognition. Jacqueline and Udo from Intro will present this one. Nothing about you're going to see should be taken literal, it's meant to be illustrative.

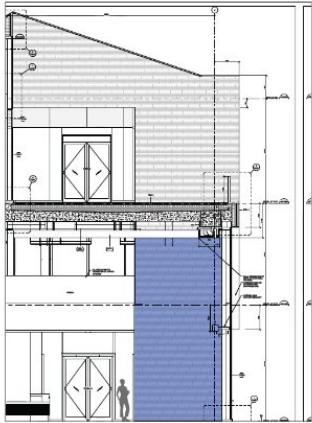
The goal was to create something unique beyond the typical donor, with will be physical and digital and will reflect all donations no matter how small. Only donations >\$5k will be on the physical portion.

LOCATION PLAN AND ELEVATION

Press ⌘+Shift+M to unmute, or press and hold down Option+Spacebar.



Location Plan



Elevation

GIVING LEVELS - NON NCL DONATIONS

Your microphone is muted
Press ⌘+Shift+M to unmute, or press and hold down Option+Spacebar.

\$50,000 - \$249,999 (\$50,000.00 TO \$249,999.00)
2 Donors

\$25,000 - \$49,999 (\$25,000.00 TO \$49,999.00)
7 Donors

\$10,000 - \$24,999 (\$10,000.00 TO \$24,999.00)
7 Donors

\$5,000 - \$9,999 (\$5,000.00 TO \$9,999.00)
4 Donors

\$1,000 - \$4,999 (\$1,000.00 TO \$4,999.00)
22 Donors

\$500 - \$999 (\$500.00 TO \$999.00)
10 Donors

\$1 - \$499 (\$1.00 TO \$499.00)
256 Donors

TOTAL
308 Donors

NOTE: All non-NCL donors will only have digital representation.

First concept: Pages of a book, that the community is coming together to create something great. The paper will fold the higher you go in the building.

CONCEPT 1 PAGES OF A BOOK



Your microphone is muted
Press ⌘+Shift+M to unmute, or press
and hold down Option+Spacebar.

The first concept offers a more literal representation. Like a cherished book, each donor contributes a page to the story of the Guelph Central Library.

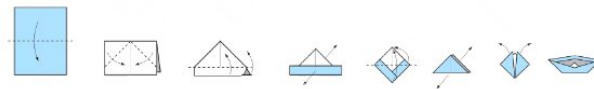
Similar to the wayfinding program which reflects the different demographic of library visitors – from children to young adults to adults, the donor installation will also demonstrate this evolution and growth in knowledge, views and ideals. Donor names can be etched or printed on these “pages,” which start off flat against the wall. As they flow up the wall, the pages become increasingly dimensional, similar to a piece of origami. The pieces of paper will also gradually lift off the wall becoming suspended from the ceiling – creating a dynamic piece of art that captures the imagination of visitors of all ages.



CONCEPT 1 PAGES OF A BOOK



Your microphone is muted
Press ⌘+Shift+M to unmute, or press
and hold down Option+Spacebar.



GROUND LEVEL
CHILDREN
ORGANIC
SMOOTH
FLAT

SHALLFRESH & COUNTRY

LEVEL 3
ADULTS
GEOMETRIC
FACETTED
DIMENSIONAL



LIGHT FIXTURES SUSPENDED IN ATRIUM

The location would be near the circulation desk, the pages would go up the wall, while the digital screens listing the names will be near the desk itself.

High level sketch:

CONCEPT 1 PAGES OF A BOOK



Your microphone is muted.
Press ⌘+Shift+M to unmute, or press
and hold down Option+Spacebar.



DETAIL
NTS



REFERENCE IMAGE
BENT METAL PAINTED WHITE

Concept #2: kaleidoscope. It will be emblematic of the community coming together from different parts to create this new space.

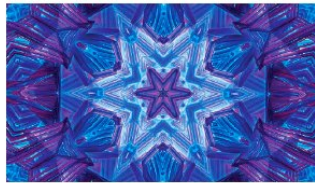
CONCEPT 2 KALEIDOSCOPE



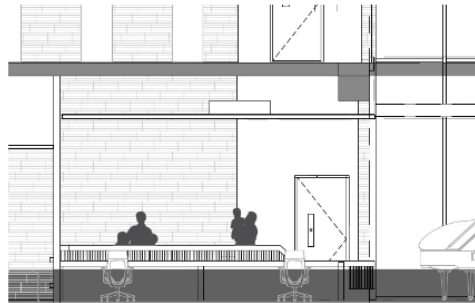
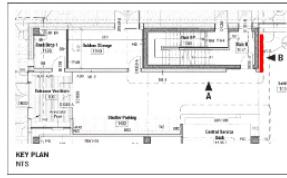
Press ⌘+Shift+M to unmute, or press
and hold down Option+Spacebar.

The second narrative concept draws inspiration from the kaleidoscope motif. Just as a kaleidoscope is formed by various intricate elements coming together to create a constantly shifting, beautiful pattern, this symbol reflects the community's collective effort in bringing the New Central Library to life—where each donation becomes a significant part of the bigger picture.

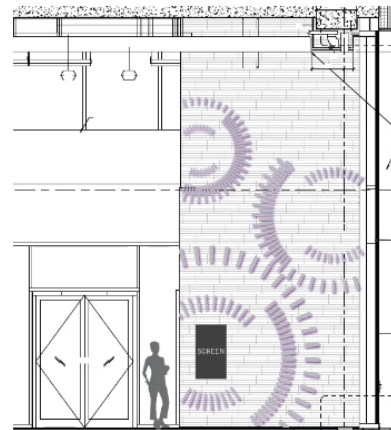
Names of each of the major donors can be physically represented on the individual shards that make up the kaleidoscope. The donor installation can be further enhanced through artificial or natural light allowing reflections and refractions to occur illustrating the resounding impact the Library and its community has.



CONCEPT 2 KALEIDOSCOPE

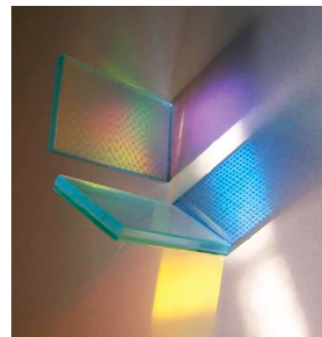
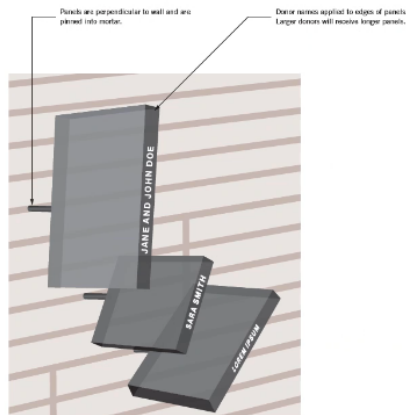


Press ⌘+Shift+M to unmute, or press
and hold down Option+Spacebar.



CONCEPT 2 KALEIDOSCOPE

Your microphone is muted
Press ⌘+Shift+M to unmute, or press
and hold down Option+Spacebar.



Questions and feedback? Klassen asks how you can find where someone's name is on the physical portion? You can Google that on the donor wall at the Calgary Library. Also, can it be added to?

Jacqueline says they do intend notes that there will be a digital component and that hasn't been fully fleshed out yet. And yes, there will be room to grow.

Ly says his preference is more the kaleidoscope if only for the light it will create. It adds more attraction and warmth to the library. Carlsson says she's having trouble picturing the 'scope, though she likes the idea of it.

Lepage says the 'scope makes art out of what everyone does for one of these, which is put names on the wall. Sees the pages as kind of "messy". Is there a price difference? Udo says that they're about the same.

Rishworth says that they've set a budget and is sure that both these concepts meet that budget. All they need to do is approve the concept. Cowan loves the 'scope but wonders about how readable the names will be.

Goller says he thinks pages would be easier to read. Webb asks if they will be easy to clean. Udo says the installation will be pretty low maintenance unless something is damaged.

Vote for pages: III

Votes for kaleidoscope: IIIII

Abstentions: I

Motion to move forward with the 'scope concept approved.

Next, Public Art Presentation with Dawn Owen from the City of Guelph.

Here's a link the City's Public Art policy: This is part of the conversation tonight, we're not making any decisions about getting or asking for any specific art piece.



The Library can acquire some art or they can put out a call for art. The Public Art Advisory committee could help with that process, or there could be a franken-committee with the PAA and the library who combined will make the determination. That might be a longer/complex process

Owen asks if they want to have a public art work completed and unveiled by the time the new library opens? That means working backwards from opening day. As for timeline, what about the lifespan of the art itself? And forever is not practical, especially if it's an outdoor piece.

How will art in the library space impact visitors? How do you want the art to impact the understanding of the building? Those are some of the considerations, as well as maintaining the art work after its installed.

Caron asks about who would be in charge of maintenance. Kind of surprise to hear that City believes there's 5 year lifespan for public art. Owen says they don't take it away after 5 years,

it's more of a 5 year examination of the conditions. Public interaction can change art. Klassen notes that there Wyndham Street redevelopment is coming in 2026 so she would like to see how those two spaces work together. (Synergy, through she hates the word.)

Klassen asks about budget. Owen says she doesn't know what the library is willing to spend, but the City has a "very, very modest" acquisition budget and resources are being deferred with the current budget process.

Atkins says there's no public art budget as part of the library construction. That said, there's a fund-raising possibility and the library board is making a significant contribution and a board motion could direct those fund to a public art project.

Cowan asks if there's a way to use the existing pieces in the collection. Owen says there are some pieces at city hall and other places, but they would have to address that on a case-by-case basis depending on what they want.

Atkins notes that the Library has two pieces of public art: The Four Seasons painting and the Paper Bag Princess statue, the GPL owns that one. Own notes that the Princess needs some repairs and Atkins says they've gotten in touch with the artist for repairs.

Caron asks about any remnants from the old Carnegie Library. Atkins says the City still has the cornerstone and about 10 pieces of furniture. They have plans to integrate some of that into new building.

Motion to extend meeting time approved.

Motion to receive last report for info approved.

Williamson notes that they should have some sort of motion to direct staff to continue the conversation about public art. Webb suggests that the board she take up the endeavour to decide what they want to see.

Motion directing exec team to come back with direction for the board to handle public art proposals is approved.

The board will now go into closed session to discuss labour relations or employee negotiations.



The wrap up!



Adam A. Donaldson
@adamadonaldson · [Follow](#)



And we're back. Williamson says he gave an update about the CEO search and they received information about the library as safe space.

12:33 AM · Oct 29, 2024 

  [Reply](#)  [Copy link](#)

[Read 1 reply](#)

@threadreaderapp unroll please!

...