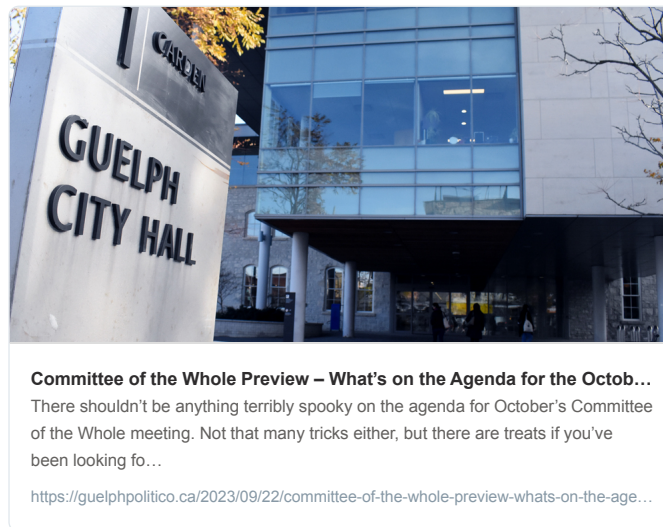




Adam A. Donaldson @adamadonaldson

Oct 3 · 100 tweets · [adamadonaldson/status/1709265822089195680](https://twitter.com/adamadonaldson/status/1709265822089195680)

Coming up at 2 pm, it's this month's committee of the whole meeting. This is what's coming up:



Holmes says that they thought they were doing a good thing getting it out of mothballs from the Municipal Street facility. They also made the decision so that it would be protected from vandalism. She also notes it was craned in and fixed there, so there'd be costs.

Allt says that he appreciates that the bell is out of storage, and that the courtyard may be the best place for it. But was a public icon, so it should be a public presence. Perhaps we can make it iconic like the Liberty Bell.

Busuttill asks if there's a public committee for the 200th beyond the staff work. Staff say that they will be looking for partnerships and collaborations, but with current resources they can't take on the work of seeking that out. Need to get budget approved.

Busuttill: So no citizens committee and that would have to go thru public process?

Evans: Essentially yes, and they have that scheduled for Q1 2025.

O'Rourke says that she regrets that there's been no public process, but has no appetite to move it. Are there not places where there are artefacts not on public display?

Clack-Bush says there are installations not accessible, but staff have been kind of taken aback by the response b/c they thought they were doing a good thing getting out of storage. Courtyard's only been complete 3 days. Centre circle from old Memorial Garden also out there.

On the clock, Clack-Bush says that she doesn't want to make any promises about the clock w/o knowing what condition it's in. Also, don't expect a budget worth millions for the

bicentennial, so wind down any expectations.

Downer says she will support the motion, she's okay where it is. It creates a sense of space and time for the facility and it's visible from the Marg MacKinnon room, which is a public room at City Hall.

Guthrie amendment passes 10-3 (Caron, Caton, and Allt against)

Amended motion:

Public Art Policy Update - 2023-359
Amendment Mayor Guthrie



1. That the potential future relocation of the City Hall clock be referred to staff, in consultation with the Public Art Advisory Committee and the Guelph Museum Board, for costing and prioritization as part of commemorative celebrations in 2027.

Guthrie/Busuttil move change in wording from "prioritization" to "consideration" and it's approved.

Another motion approves change to read Guelph Museums Advisory Committee, not board.

Finished motion, approved unanimously.

Public Art Policy Update - 2023-359
Amendment Mayor Guthrie



1. That the potential future relocation of the City Hall clock be referred to staff, in consultation with the Public Art Advisory Committee and the Guelph Museums Advisory Committee, for costing and consideration as part of commemorative celebrations in 2027.

Next item, Culture Plan 2030 Staff Report. Adkin is presenting again. This has been in the work since 2019, and stalled during the pandemic, which Adkin says exacerbated the issues in the culture section.

There are serious challenges threatening local culture: Lack of affordable space for exhibition or rehearsal, shortage of affordable housing, difficulty attracting audiences and volunteers. And yet, people are dedicated to serving culture in Guelph.

The mission: "Working together – with a collective vision and collaborative effort – to support community vitality, equity and inclusion, environmental responsibility, and economic prosperity in and through culture."

How? 1) Cultivate: That means attraction, investment and promotion. Holding space for marginalised groups in Guelph, and adapting culture friendly bylaws. Plus, it means creating conditions for affordability.

2) Connect: Creating connections between the community and the culture sector, and that includes networking and engaging diverse audiences, plus presenting programs for "equity

deserving audiences".

3) Champion. Identify and support designations for key cultural industries, work with economic and tourism partners, and embrace the bicentennial in 2027.

Key quote in summery: "The current culture scene across Guelph is energized and ready to perform the functions of Culture for our Community, Nation, and International Communities."

There are three delegates for this item starting with Jay Wilson, aka: JayWalking. He says there was a lot of inspiration in the engagement sessions, and there needs to be attention paid in the weaknesses and threats. He also notes that cultural value goes beyond 🏛️🏛️🏛️.

Next up, former-Cllr Mike Salisbury. He's been working on a community art space in the Drill Hall, and he's that there's been a lot of crossover in their work and the results of the Culture Plan. The various culture sectors are too siloed, and that a big thing that needs changed.

Salisbury says it's rehearsal, study and experimental space that's most in need. It's not as sexy as exhibition space, but it's important for the practice and honing of the craft.

Damian Weston, executive director of Guelph Arts Council, echoes previous comments about the value of the arts beyond the mercurial. Weston has been both artist and social worker, and he notes that the pandemic had ppl turn to the creative out of hope, not escape.

Weston notes that GAC is marking their 50th anniversary last year, and this is the first time that there's been a plan for culture on the table.

O'Rourke asks about the health of private facilities in Guelph. Weston says it depends on the sector, but no sector has enough space available, and we're no where close to London in terms of available. (Ontario, not England.)

O'Rourke asks about maximising all current spaces, venues that can be used during the day too. Weston says that we should be looking at model of making all spaces multifaceted, and maximising space is currently the main project of the GAC.

Recommendation is put on the floor:

- 1) That Culture Plan 2030 be approved.
- 2) That costs associated with the implementation of Culture Plan 2030 be referred to the 2024-2027 multi-year budget process.

Busuttil asks why parks weren't specified as an art space. Adkin says they wanted to keep the opportunity broad, parks are part of the equation, but so are rec centres, museums and city hall.

Busuttil asks if there's a process for conversation to answering arts needs for parks, like outlets. Adkin says she's hear about those frustrations and they've indicated in the plan that staff will act as advocates for expanding creative centres.

Busuttil asks about considerations for the west and south ends. Adkin says those areas were repeatedly identified for needs in the community engagement, they're going to follow-up with complete gap assessment.

Busuttil asks about the Mitchell farmhouse, which was demolished with the promise of some kind of placemaking later. That was 20 years ago and nothing happened. Adkin says she's doesn't know much about the farmhouse, but they can come back with more info.

Busuttil says that she was concerned about a comment that the west end is "deficient" in culture spaces. She says she doesn't think the west end is deficient, but there is a lack of support. Adkin says that was taken from feedback. "Cinema in the City" an example of changing that

O'Rourke says she's been looking to get rush tickets for River Run events for a while so she's glad that's here, plus mention of accessible performances, and keeping bylaw in the loop about cultural events...

...question: Where do the comparitors come from? Adkins says good data on municipal cultural spending among Guelph's usual comparitors was too all over the place, so they had to seek out data it out from third parties. They looked at per capita spending too to weight it.

O'Rourke asks why Sleeman Cente, the library or other informal spaces? Adkin says that libraries are not in municipal benchmarking, but Marko Square programming is.

O'Rourke asks if these are things that the City is committing too. Adkin says that's the hope, it is a 7 year plan so they can space out the investment.

O'Rourke wants to make sure that intergovernmental staff are okay with the recommendation to advocate for affordable housing and UBI for artists specifically. There's a need for all kinds of people to get access to those things.

Adkin says that she understands that consideration, but the precariousness of the arts and culture sector does leave them particularly susceptible. If artists can't afford to live here, there's no culture, and that's a big loss to the community in many ways.

Klassen asks about lack of language about placemaking. Clack-Bush says that a multi-department function, and usually it's infrastructure that takes the lead on that, but they don't do it in a void. Placemaking tends to be site-specific.

Holmes says that placemaking, specifically around downtown, will be coming back to council with the EDA of the changes on Upper Wyndham, unless the Klassen wants to talk about something more city-wide.

Klassen says that they need to look at placemaking more broadly, like with the South End Community Centre construction, who will that be turned into a placemaking opportunity? Evans says staff are always looking for those opportunities.

Chew asks about reaching people who don't typically come out to community engagement. Adkin says that the Cinema in the City event at Orin Reid Park was a big success, and it was a reminder to her that there's still a lot of work to do on outreach and representation.

Chew notes that there's a pizza place in the south end that hangs local art works that aren't typically thought of as culture spaces, is there a way to highlight stories like that? Adkin says mapping all those places will be the next phase of this work.

Caton asks if there's a plan to work with transit to find the gaps in the culture map for service. Adkin says there is a need in the plan to identify the transit and active transportation options to get to venues.

Guthrie asks how quickly change can be initiated. Adkin says within the strategy there are a number of easy immediate actions to start making change.

Guthrie asks if there's an intention to lower the cost for people to access culture. Evans says they want to look at that and generate new opportunities. There are subsidies with some rec programs, but right now reviewing rates and fees, but they could bring something back.

Downer asks if its possible to have an implementation timeline for the end of the month. Evans says they can do that using short, medium and long-term metrics.

Caron recalls an experience seeing The Wizard of Oz in Market Square during a free movie night, and a man experiencing homelessness was sitting next to her enjoying it. It was a reminder to her about the need to bring down barriers on culture.

Busuttill says that there are a number of things that need to be considered, some of them big. She refers to the need of a passage or trail under the Metrolinx tracks in the west end, where the west end is split north/south down the middle.

Klassen says that she's been having discussions with staff and colleagues about coming up with a placemaking strategy. Chew points out that there's a desperate need for way finding, and that should be a part of this too.

Cultural Plan approved unanimously.

Up next, Parks and Recreation Master Plan.

Presenting are:

Mallory Lemon, Manager, Park and Trail Development

Eric Pool, Project Manager, Recreation Master Plan

The purpose of this plan:

Replaces the 2009 Plan.

Identifies needs for current and future residents.

Sets direction for parkland, recreation facilities and recreation programs in the City over the next 10 years and beyond.

...

Plus, It guides how the City plans, designs, funds, builds and maintains the park and recreation network..

There were 40 different feedback sessions that informed this plan.



Community engagement

- 4** Community surveys
- 2** Public open houses
- 3** Community workshops
- 2** Community focus groups
- 1** Developer focus group
- 1** Sport user group meeting
- 15** Parks and recreation facility pop-ups
- 5** Community pop-ups
- 5** Presentations to Advisory Committees of Council, including the Accessibility Advisory Committee and the Natural Heritage Advisory Committee
- 1** Brainstorming session with over 300 children in grades 2-5 during the City's Local Government Week visits
- 10** Internal participant workshops with key municipal departments
- 10** Individual community group meetings with Youth Council, Youth Providers Committee, Local Immigration Partnership, Upper Grand District School Board, Guelph Neighbourhood Support Coalition and Indigenous Nations
- 1** Virtual Sharing Circle as part of an ongoing relationship building initiative with community members of First Nation, Inuit, Métis and mixed Indigenous ancestry. The conversation was themed around parks and outdoor spaces.

Over **40** different opportunities to share feedback

Vision: Parks and recreation are essential to everyday life in Guelph. To be future-ready, Guelph needs parks, facilities and programs that are sustainable, inclusive, adaptable and have a built-in ability to respond to a growing and diverse community. (continued)

The City needs to connect people to each other, healthy living and the environment.

Core values:

All people can participate in recreation

Infrastructure is maintained, sustainable and responsive to community changes
(continued)

Parks and recreation facilities are welcoming and meaningful places for all people

The natural environment is protected, restored and responsibly managed.
(continued)

A healthy and vibrant community is supported through parks and recreation

The Parks and Recreation departments work together with the community.

(You can see all 97 recommendations and their timetable for completion starting on page 114 of the master plan.)

<https://pub-guelph.escrimemeetings.com/filestream.ashx?DocumentId=40705>

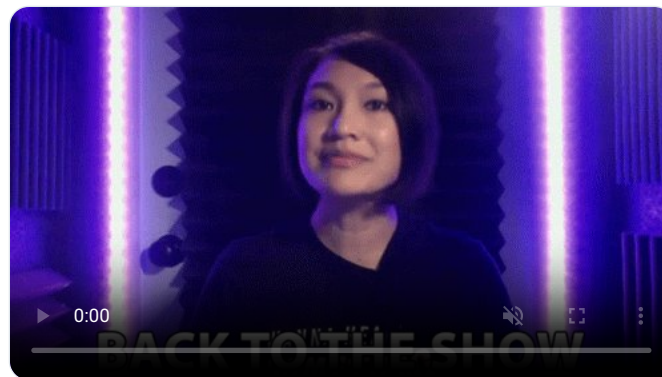
Council passes a motion to suspend the procedural bylaw to allow a delegate to speak who didn't pre-register and it's approved unanimously.

Pat Page, who's a board member of the Guelph Wellington Seniors Association, says that he group is interesting in refreshing and reworking the old age strategy. They doing their own work on how to engage older adults and want to work with the City on promo.

O'Rourke asks why recommendations 92 and 95 are insufficient. Linda Jeffrey , ED of the GWSA, says that they just want to make sure that they demonstrated their willingness to be a good partner in the efforts.

Evans says they value the GWSA as a partner, and are especially please to have them as a major tenet at the Evergreen Seniors Centre, but they do also want to recognise that there are other partners in developing age-friendly strategies.

Before we get into questions from staff, we're going to take a dinner beak. Back in 30 minutes!



Guthrie/Busuttill moves the recommendation:

*That the Parks & Rec Master Plan dated Aug 2023 be approved.

*That the funding requirements for the PParks & Rec Master Plan be referred to future operating and capital budgets in order to implement the recommendations of the plan.

Gibson asks about making partnerships to accelerate the plan. Lemon says that there are built in opportunities like rec #9.

O'Rourke asks about #19 and shading. Lots of parks in the south end are former farmers' fields with no shade. Lemon says there's another recommendation about intensifying existing parks, which includes shading and seating.

O'Rourke asks about memorials, will people be able to get a plaque on an existing tree and bench. Parks Manager Gene Matthews says they're looking at affordable options for people to create memorials. Staff looking to relaunch bench program with new price points

On signage, O'Rourke asks about storytelling about why parks are named the way they are. Lemon says they're working on signage strategies with other departments. A lot of different signs that come from different eras of park planning.

O'Rourke asks about including a quiet room or multi faith prayer room in rec facilities. Pool says that wasn't noted specifically, but they are looking at it from the general view of how rec centres can fill needs in everyday life.

O'Rourke asks if staff plans to continue having printed copies of info available. Evans says that this is the intent, and they will also be doing things to make more rec details available on the website too.

Busuttil asks what "placemaking investments" means? Pool says it means a lot of things, and nothing at all. Placemaking is about the generation of ideas, how can we do more with the rec assets we have using small investments?

Busuttil asks if school space is in the data. Lemon says only City controlled or maintained land is including in the parkland numbers.

Busuttil asks about turning green space into stormwater facilities. She says it doesn't seem like that land is still park space, but staff think it is? Lemon says there's no plans finalised, but they do need to build in rec plans. Stormwater ponds will not be fenced off.

Busuttil asks if there's a "stewardship policy" like how community gardens are run? Lemon says there is a stewardship leaders program and its volunteer driven. Staff want that to continue in this plan.

Busuttil notes that there's a missed opportunity about concessions in some area parks. Matthews says that this is something that just did not come up in conversations a lot in the engagement process. Busuttil thinks that this could be a great opportunity in her area.

Busuttil asks if its possible for community groups to get copies of the rec guides. Evans says that's something that they heard in the engagement, and probably went too far into digital during the pandemic.

Richardson asks about water access as barriers for community gardens in some parks. Lemon says they understand the needs, and believe that a couple of the recs will relieve the pressure like saving space for gardens in new parks.

Klassan asks if the City looks at schools, the U of G, or private gyms when mapping needs? Lemon says they don't look at privately owned rec, but they did look at schools servicing the greater community.

O'Rourke asks adding dog parks, is that still part of the conversation? Matthews says the convo is ongoing, and they're not exploring additional fenced off leashed dog parks, but they are looking at operational changes.

Billings asks if staff thinks that we should change parkland targets due to legislative changes? Lemon says they're doing a parkland acquisition strategy. Getting parkland was a slog before Bill 23 and now it's a bigger slog.

Caton asks if she like to change one of the recommendations, would staff like to have a motion. Matthews says that she could give them some information about the changes she would like to see they can work with her to develop that motion for Oct 24.

Caton asks about making food options in rec centres available to people with allergies or other sensitivities. Pool says that is a consideration and they're working with public health. Note that its weird to invite ppl to get active and then give them a vending machine w/junk.

Caton asks if staff are looking at offering gender neutral facilities as part of their review of public washrooms. Lemon says there's nothing explicitly mentioned in the plan, but that will be one of the considerations.

Clack-Bush says that this plan is meant to set out the "lofty goals" how fast and how big things can get done is dependent on how hard city council hits the gas pedal, which, in this case, is a metaphor for the multiyear budget.

Guthrie asks what type of filters staff will be using to make sure that nothing's being missed or forgotten in park planning. Matthews says they have examples of things that work like the feedback around new playgrounds. Need to look at formal processes to make sure its timely.

Guthrie asks about co-ordination with other departments. Lemon says that this is one of the things that's mentioned explicitly in the plan. Matthews adds that it's also been a top down mandate to make sure co-ordination's there.

Comments? Chew says if asset management is accessible and easy to understand that would be preferable in order to help people understand changes being made.

O'Rourke says there's been massive progress made in the last 5 years on rec. Thanks staff for that progress, and she appreciates all the little details in the plan.

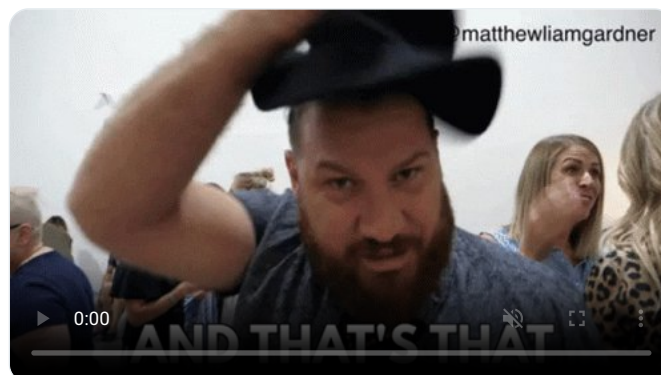
Gibson also thanks staff and he encourages all councillors to avail themselves of the opportunity get questions answered in advance of the meeting. He says he was looking for things not mentioned because it seemed to cover everything.

Caron calls this legacy work, and Allt agrees adding that there's a reminder here about making sure that infrastructure gets replaced in a timely manner.

Caton loves the plan, and if she sounds critical its because she wants Guelph to be the best, especially on accessibility where standards in some places are abysmal. She adds that points 16-18 are 🔥

Recommendation approved unanimously.

No announcements, so the meeting is adjourned.



Addendum: The Bell:



@threadreaderapp unroll please!

...